

# The Summer Show 2026

*(a group show)*

Tuesday 3rd Feb - Saturday 28th Feb  
Opening reception Saturday 7th Feb 3-5pm



## Catalogue of works

Series  
Moments in Monet's Tulip Garden  
*Giverny, France 2025*

Artist Jane Gerrish

## *Artist Statement*



## **Moments in Monet's tulip garden**

*Giverny, France 2025*

Between showers, for a fleeting moment, electrifying golden sunshine flooded Monet's historic garden. Warmly welcoming artistic pilgrims, the magnificent Giverny site shone, in all her glory.

In the distance shimmering lily ponds and Japanese bridges formed a soft backdrop. In the foreground, a vast display of exotic tulips glistened with rain, arresting the senses and commanding attention.

Languid ribbons of fuchsia pink trailed down waxy white contours and around frilled edges. Petals in rose, peach, and ivory blushed with infusions of magenta and coral.

Perched on tall stems, Spring tulip buds slowly unfurling bore testament to nature's ingenuity. Creating texture and movement, rhythms of dappled light and dusky violet shadows completed the scene.

Captivated, I was inspired. Back in my studio on return from France, on French papers I layered watercolour, creating fluid textures and delicate hues to convey the essence of the tulips.

Small passages from the prepared papers were carefully curated to assemble minimal abstract collages. The finished compositions capture memories of atmospheric moments in Monet's garden.

Designed by the artist, the soaring windows of his home frame vistas of the garden at Giverny. Relishing the offerings of each new season, Monet referred to his garden as his living colour palette, and his flowerbeds as his paintboxes.

A sublime colourist, during his 43 years at Giverny he took these views as his subject, and it was here that the father of abstraction painted his now iconic Water Lilies series. Some historians believe that Monet's bespoke garden was inspired by an elaborate design he saw in the Egyptian Pavilion, at the 1878 Exposition Universelle in Paris.

An enchanting part of his artistic legacy, the meticulously planted acreage at Giverny is cared for today by a team of eight expert gardeners, and along with the artist's home remains open to the public.

For this series I used watercolour and coloured pencil.

Claude Monet

Born 1840 in Paris

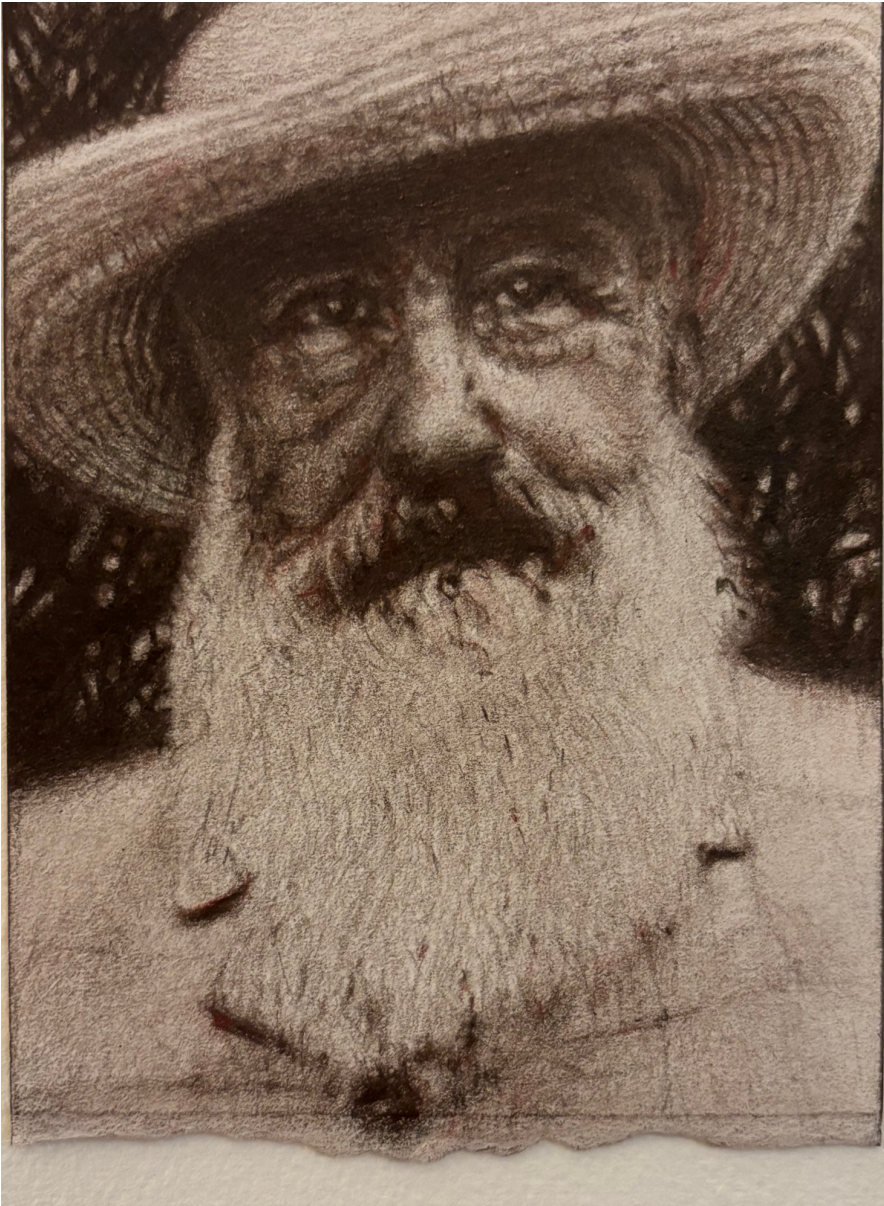
Lived at Giverny from 1883

Died 1926 Giverny

*Jane Gerrish*

*2025*

## *Details of works*



#1

Claude Monet at Giverny c1915

*Inspired by Sacha Guitry photograph*

Coloured pencil on French watercolour paper

Framed H 27 cm W 20.5

Coloured panel H 13.5 cm W 10 cm

\$660



# 2

First tulips of Spring

*Monet's Garden, Giverny, France 2025*

Artist photograph taken on location at Giverny, printed on best quality archival paper

\*(Edition of 6)

Framed H 10.5cm W 10.5cm

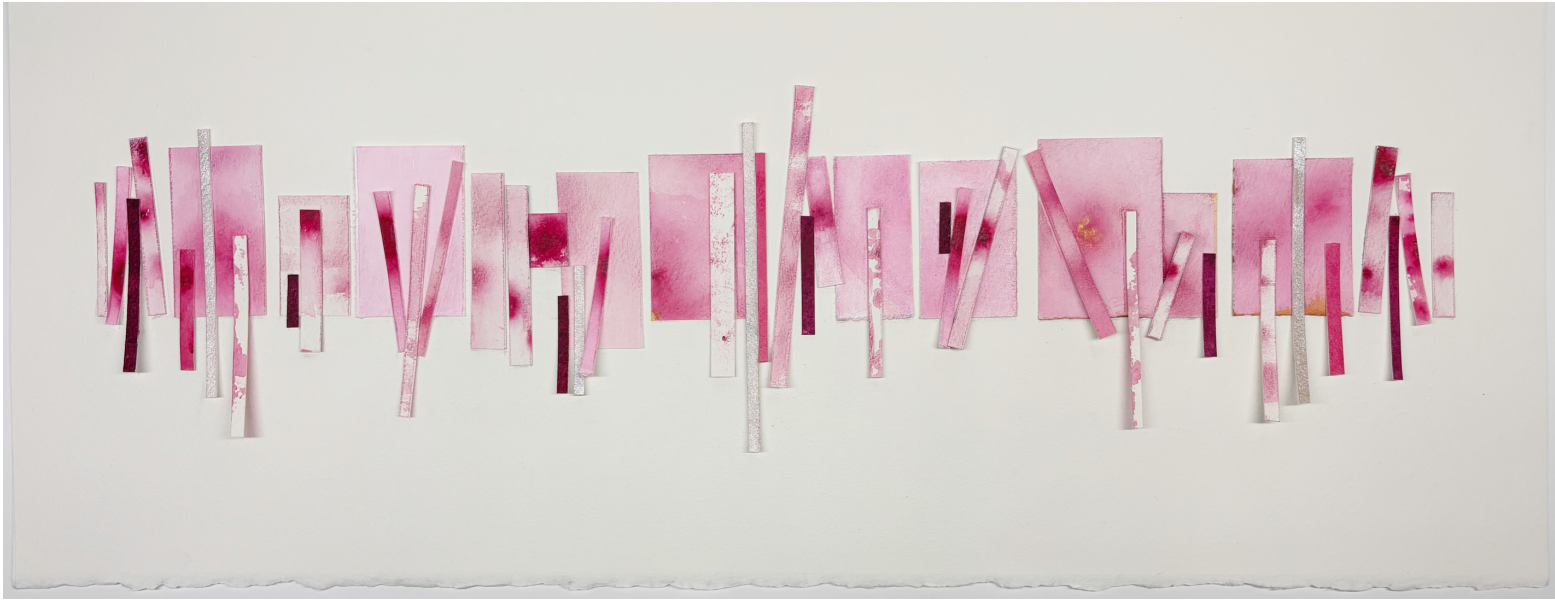
Photographic image H 9cm W 9cm

\$200

**SOLD**

**1 of 6 editions**





#3

Tiptoe through the tulips

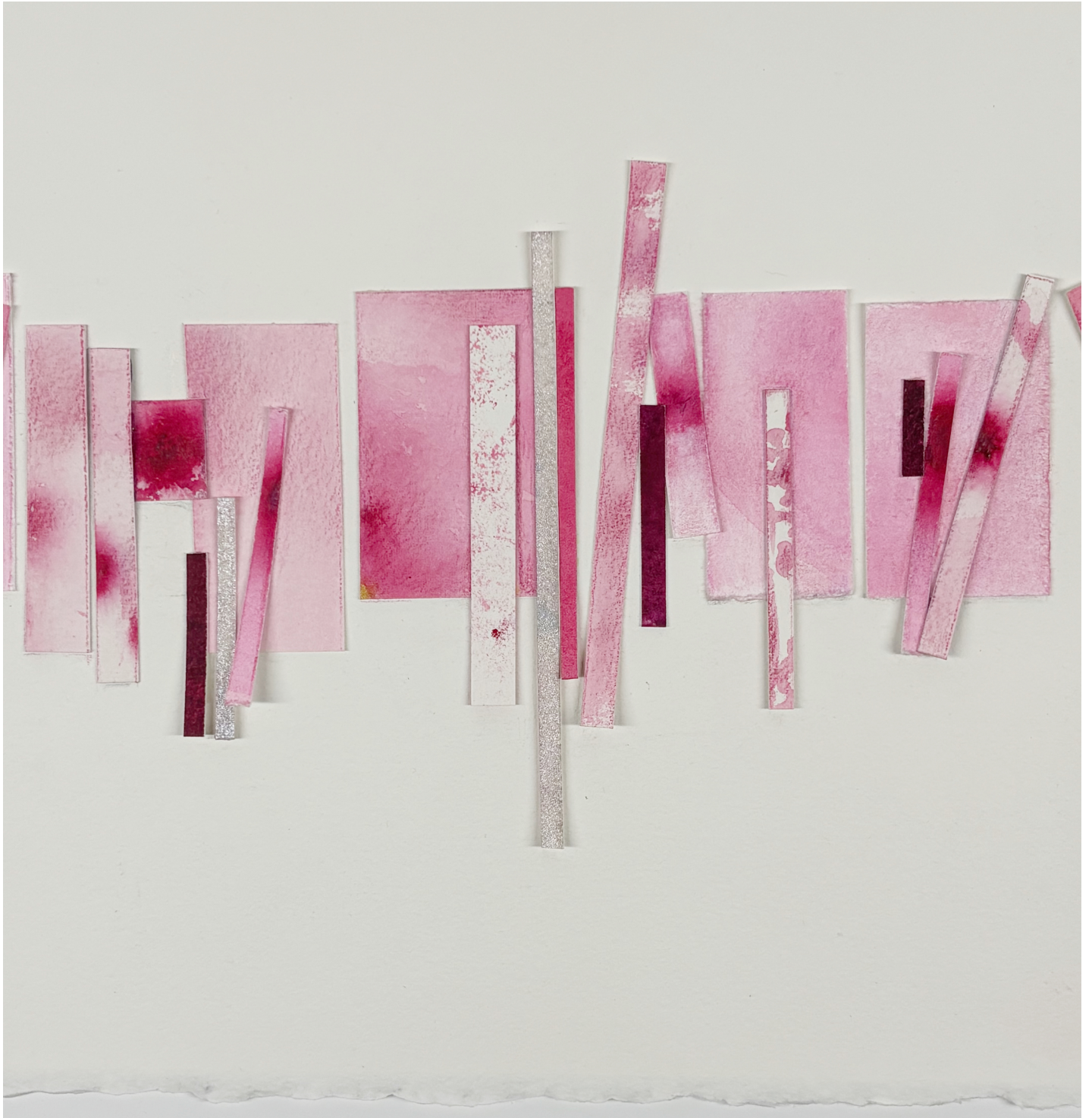
*Monet's Garden, Giverny, France 2025*

Collage of papers made with watercolour and coloured pencil

Framed H 35cm W 75cm

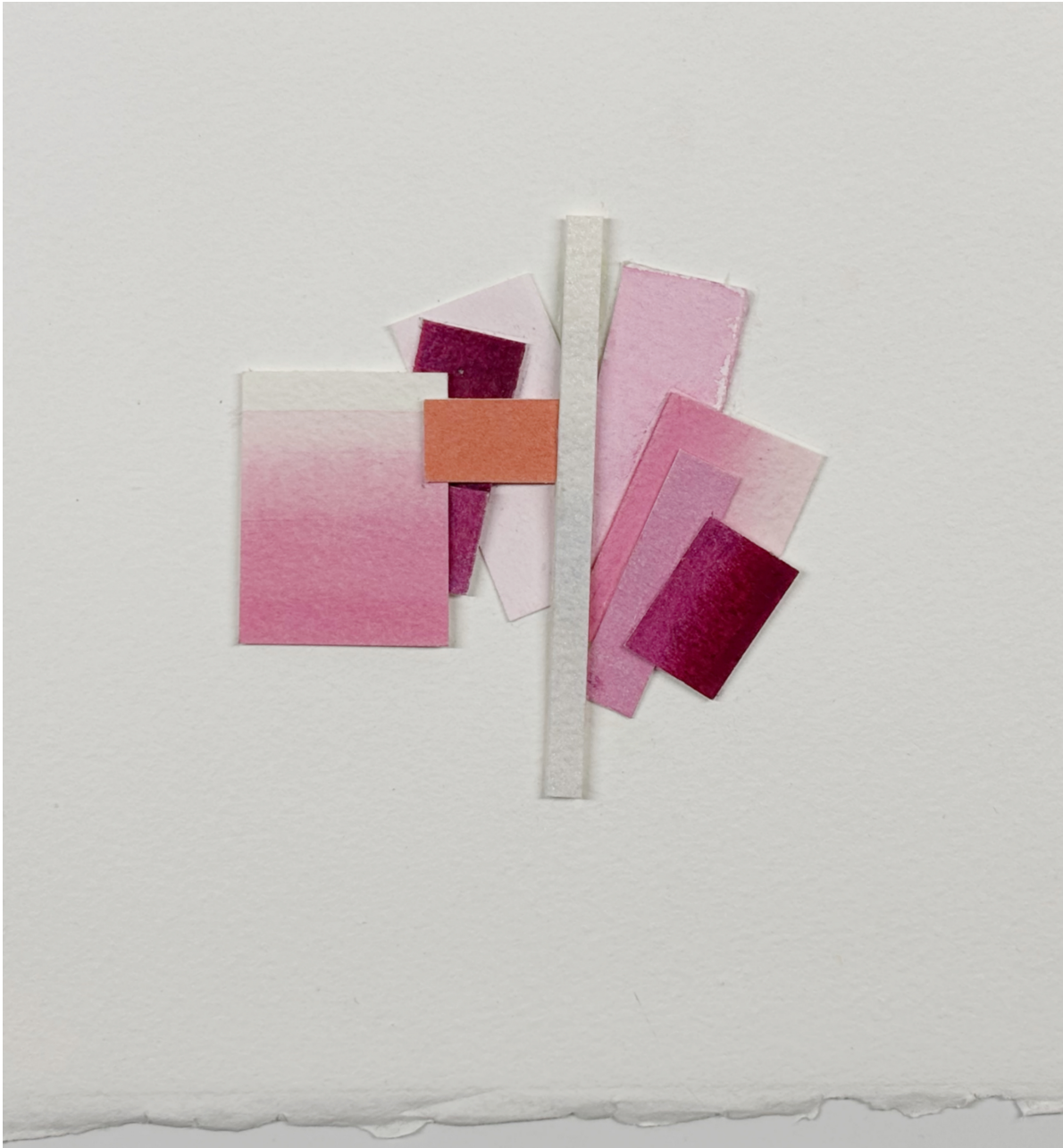
White paper support H 24cm W 62.5cm

\$2800



#3  
Tiptoe through the tulips (Detail)  
*Monet's Garden, Giverny, France 2025*





#4

Falling tulip petals

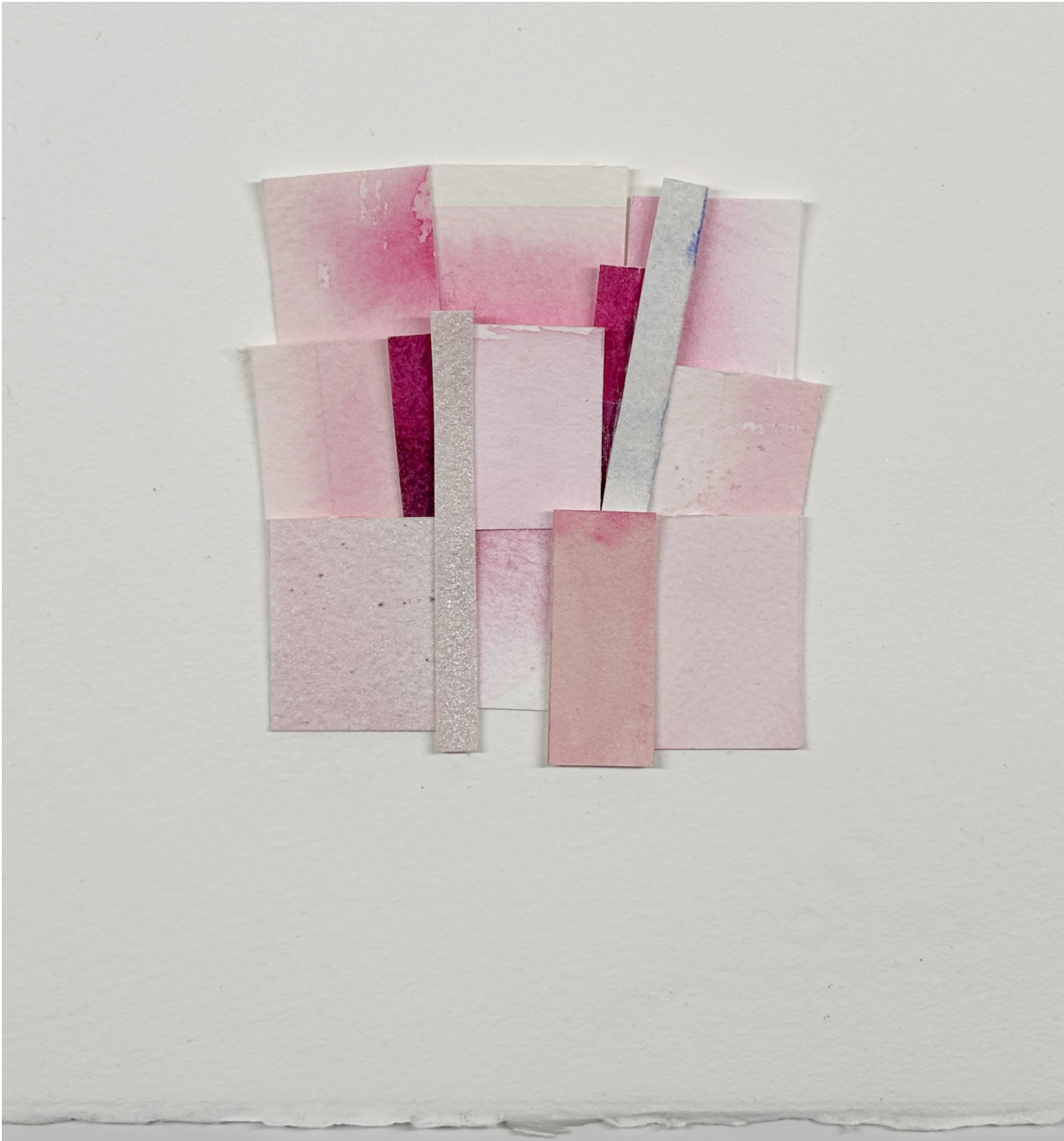
*Monet's Garden, Giverny, France 2025*

Collage of papers made with watercolour and coloured pencil

Framed H 24cm W 23.5cm

White paper support H 17.5cm W 17 cm

\$660



#5

Fluttering tulip petals

*Monet's Garden, Giverny, France 2025*

Collage of papers made with watercolour and coloured pencil

Framed H 24cm W 23.5cm

White paper support H 17.5cm W 17cm

\$660





#6

Opening tulip petals

*Monet's Garden, Giverny, France 2025*

Collage of papers made with watercolour and coloured pencil

Framed H 24cm W 23.5cm

White paper support H 17.5cm W 17cm

\$660



#7

Tulip petals and stem

*Monet's Garden, Giverny, France 2025*

Collage of papers made with watercolour and coloured pencil

Framed H 24cm W 23.5cm

White paper support H 17.5cm W 17cm

\$660



#8

Glistening tulip petals after rain

*Monet's Garden, Giverny, France 2025*

Artist photograph taken on location at Giverny, printed on  
best quality archival paper

\*(Edition of 6)

Framed H 10.5cm W 10.5cm

Photographic image H 9cm W 9cm

\$200





#9

Raindrops on pink tulip  
*Monet's Garden, Giverny, France 2025*

Artist photograph taken on location at Giverny, printed on  
best quality archival paper

\*(Edition of 6)

Framed H 10.5cm W 10.5cm  
Photographic image H 9cm W 9cm  
\$200



#10

The day we went it was raining  
*Monet's Garden, Giverny, France 2025*

Watercolour on French paper

Framed H 36cm W 31cm (*approx*)  
White paper support H 29cm W 24cm  
\$1100

## *Artist CV*

# Stella Downer Fine Art

## Dealer Consultant & Valuer

Member of the Australian Commercial Galleries Association  
ABN 86 229 108 803

Born in Sydney in 1958, Jane studied design at ESTC, a Postgraduate Diploma in Design at UTS and applied these skills to a career in fashion and textiles.

Furthering her skills in drawing and painting, Jane has trained with Juliet Holmes à Court, Celia Gullett and Jennifer Keeler-Milne.

As a workshop assistant with 'Dare to Draw', she was Artist in Residence in 2017 and 2018. She also assisted Juliet Holmes à Court at her painting workshop at Bundanon, NSW.

With publications, in 2021, Jane was featured in the AGNSW 150<sup>th</sup> Anniversary edition of Look Magazine.

Characterised by expertly detailed and tonal drawings in colour pencil and pastel, Jane's art practice is grounded in her passion for research. Recent themes have included the lives of prominent Modernist artists, plants and shells. Each of her drawing series is the product of curiosity and enquiry as she experiments with form, light and shadow to push the boundaries of her subject and medium. Seeking to instil in the viewer the wonderment of her discoveries, the artist's atmospheric work often reveals a dreamy or mysterious mood reflecting her love of illumination, creating meditative stillness.

Jane has exhibited in Sydney with Stella Downer Fine Art (SDFA), Waterloo; Saint Cloche Paddington; Frances Keevil (Studio W) Woolloomooloo and Gallery East Clovelly. She has had solo shows at Gallery East in 2016 and Suki & Hugh Gallery, Bungendore in 2018 and 2021, and Stella Downer Fine Art (SDFA) in 2023 and 2024.

She lives and works in Sydney and spends every spare moment thinking about, researching and making art.

## Jane Gerrish

T: 0402 018 283

E: [stellart@bigpond.com](mailto:stellart@bigpond.com) E: [info@stelladownerfineart.com.au](mailto:info@stelladownerfineart.com.au)

W: [www.stelladownerfineart.com.au](http://www.stelladownerfineart.com.au)

1/24 Wellington Street Waterloo 2017

Find us on



Jane Gerrish

Born 1958, Sydney

### **Solo Exhibitions**

2024 *Sequel*, Stella Downer Fine Art, Sydney, NSW

2022 *Perfect Impermanent*, Stella Downer Fine Art, Sydney, NSW

2021 *Observe*, Suki & Hugh Gallery, Bungendore, NSW

2018 *Still Light*, Suki & Hugh Gallery, Bungendore, NSW

2016 *Museum*, Gallery East, Sydney, NSW

### **Group Exhibitions**

2025 *Life Drawing Studio*, One + 2 Gallery, Rozelle, NSW

2025 *MUSE*, Goodtimes Gallery, Chippendale, NSW

2024 *Life Drawing Studio*, One + 2 Gallery, Rozelle, NSW

2023 *The Summer Show*, Stella Downer Fine Art, Sydney, NSW

2021 *Shades of Summer*, Stella Downer Fine Art, Sydney, NSW

2021 *End of Year Show*, Studio W, Sydney, NSW

2020 *Mother*, Gallery East, Sydney, NSW

2019 *Deliberations: Time and Light*, Gallery East, Sydney, NSW

2019 *Rekindled*, Saint Cloche, Paddington, NSW

2017 *Painted Songs*, Gallery East, Sydney, NSW



## **Awards**

*Finalist, Linden New Art 2025, St Kilda, VIC*

*Finalist, Adelaide Perry Prize for Drawing 2021/2023, Croydon, NSW*

*Finalist, Waverley Art Prize 2016/2021, Bondi, NSW*

*Finalist, Ravenswood Australian Women's Art Prize 2020, Gordon, NSW*

*Finalist STILL, National Still Life Award 2019, Coffs Harbour Regional Gallery, Coffs Harbour, NSW*

*Finalist, Mini Series Art Prize 2019, The Corner Store Gallery, Orange, NSW*

*Finalist, Little Things Art Prize 2016/17/18/19/25, Saint Cloche Gallery, Paddington, NSW*

*Finalist, Hornsby Art Prize 2016/17/18, Hornsby, NSW*



*(photo of Monet c1915 walking in his gardens at Giverny, Normandy, France. Photographer likely Sacha Guitry)*

**‘I perhaps owe having become a painter to flowers’**  
*Claude Monet (1840-1926)*

---